

NOVA

DVR XP Control Panel

Upgrade (SKU 55523)



Publication 119-1216-005

06. December. 2016

NOVA DVR XP Control Panel Upgrade Features (SKU 55523):

- Braking features have been implemented in DVR XP control panel upgrade. (Note: Enable for XP version 8.xx and above, version 6.xx is not braking compatible)
- Speed chart.
- Speed dial knob.
- New keypad and interface to give the user instant access to the preset speeds.
- Fits on most NOVA DVR XP Wood Lathe (newer than ver.6.06)
- Wireless Remote II connectivity.

NOTE:

- All values are approximate and calculated under the specific test conditions. For end users, these values might be varied according to workshop conditions, other electronic equipment interference, battery types and operation distance, etc.
- DVR XP control panel upgrade may not be available in all countries/markets. See our website or your NOVA Retailer for more information.

FCC STATEMENT

This device complies with Part 15 of the FCC Rules. Operation is subject to the following two conditions:
(1). This device may not cause harmful interference, and
(2). This device must accept any interference received, including interference that may cause undesired operation.

Note:

Changes or modifications not expressly approved by the party responsible for compliance could void the user's authority to operate the equipment



Contact Teknatool

New Zealand

Teknatool International Ltd

Phone: (+64) 9 477 5600

Fax: (+64) 9 477 5601

Email: service@teknatool.com

Website: www.teknatool.com

United States

Teknatool Service Center

Phone: 1-866-748-3025 or +1-727-954-3433

Email: service@teknatool.com

Website: www.teknatool.com

For complete listing of stockists, please see our website for your nearest NOVA dealers. <http://www.teknatool.com/distributors.htm>

Table of Contents

GENERAL SAFETY RULES	5
ADDITIONAL SAFETY RULES:.....	7
Section one:.....	8
Installation Instructions	8
Control Panel Instructions	10
New functions in the control panel.....	11
Section two (Optional Accessory Sold Separately):	14
Installation Instructions	15
Remote Button Layout.....	19
Operating instructions.....	20
Troubleshooting:.....	21

© Copyright 2001-2016 by Teknatool International; All Rights Reserved.
Nova DVR is a trademark of Teknatool International Ltd.

The information and specifications contained herein are subject to change. Teknatool is not responsible for errors or omissions herein or for incidental damages in connection with the furnishing or use of this information.

GENERAL SAFETY RULES



Warning! Failure to follow these rules may result in serious personal injury.

IMPORTANT: THIS REMOTE IS NOT INTENDED FOR USE AS AN EMERGENCY DEVICE AND SHOULD NOT BE RELIED UPON AS SUCH

1. **FOR YOUR OWN SAFETY, READ THE MANUAL BEFORE OPERATING THE TOOL.** Learn the machine's application, limitations and the specific hazards particular to it.
2. **ALWAYS USE A FULL FACE SHIELD. Strongly recommended.** (Must comply with ANSI STANDARD Z87.1 -USA) Everyday eye-glasses usually are only impact resistant and safety glasses only protect eyes. A full face shield will protect the eyes and face. Also use face or dust mask if cutting operation is dusty.
3. **WEAR PROPER APPAREL.** Do not wear loose clothing, gloves, neckties, rings, bracelets or other jewelry which may get caught in moving parts. Non-slip footwear is recommended. Wear protective hair covering to contain long hair.
4. **USE EAR PROTECTORS.** Use ear plugs or muffs for any period of operation. Use muffs rated to 103 DBA LEQ (8 hour).
5. **DON'T USE IN DANGEROUS ENVIRONMENT.** Don't use power tools in damp or wet locations, or expose them to rain. Keep work area well lighted. The DVR Wood Lathe is intended for indoor use only. Failure to do so may void the warranty.
6. **KEEP WORK AREA CLEAN.** Cluttered areas and benches invite accidents. Build-up of sawdust is a fire hazard.
7. **KEEP CHILDREN AND VISITORS AWAY.** The Nova DVR is **not recommended** for children or the infirm. Such personnel and onlookers should be kept at a safe distance from the work area.
8. **MAKE WORKSHOP CHILDPROOF.** Utilize locks, master switches, or by removing starter/lockout keys.
9. **GROUND ALL TOOLS.** If the tool is equipped with a three-prong plug, it should be plugged into a three hole electrical receptacle. If an adapter is used to accommodate a two prong receptacle, the adapter plug must be attached to a known ground. **NEVER** remove the third or grounding prong.
10. **DISCONNECT TOOLS.** Ensure the plug is removed from the wall socket before servicing and when changing accessories such as blades, bits, cutters and fuses, etc.
11. **AVOID ACCIDENTAL STARTING.** Make sure switch is in the **Off** position before plugging in power cord into the wall socket.

12. **NEVER LEAVE MACHINE RUNNING UNATTENDED.** Do not leave machine unless it is turned off and has come to a complete stop.
13. **KEEP GUARDS IN PLACE.** Ensure guards are in working order.
14. **USE CORRECT TOOLS.** Do not use a tool or attachment to do a job for which it was not designed.
15. **DON'T FORCE THE TOOL.** It will do the job better and be safer at the rate/force for which it was designed.
16. **MAINTAIN TOOLS IN TOP CONDITION.** Keep tools sharp and clean for the best and safest performance. Follow instructions for lubricating and changing accessories.
17. **NEVER STAND ON THE TOOL.** Serious injury could occur if the tool is tipped or if the cutting tool is accidentally contacted.
18. **REMOVE ADJUSTING KEYS AND WRENCHES.** Form a habit of checking to see that keys and adjusting wrenches are removed from tool before turning it on.
19. **DON'T OVERREACH.** Keep proper footing and balance at all times.
20. **DIRECTION OF FEED.** Feed work into the blade or cutter against the direction of rotation.
21. **ATTENTION TO WORK.** Concentrate on your work. If you become tired or frustrated, leave it for awhile and rest.
22. **SECURE WORK.** Use clamps or a vice to hold work when practical. It's safer than using your hand and frees both hands to operate tool.
23. **CHECK DAMAGED PARTS.** Before further use of the tool, any part that is damaged should be carefully checked to ensure that it will operate properly and perform its intended function. Check for alignment of moving parts, binding of moving parts, mounting, and any other conditions that may affect its operation. Any damaged part should be properly repaired or replaced.
24. **DRUGS, ALCOHOL OR MEDICATION.** Do not operate machine while under the influence of drugs, alcohol, or any medication.
25. **DUST WARNING.** The dust generated by certain woods and wood products can be harmful to your health. Always use an approved dust mask and operate machinery in well-ventilated areas. In addition, provide a means for proper dust removal. Use wood dust collection systems whenever possible.

ADDITIONAL SAFETY RULES:



Warning! Failure to follow these rules may result in serious personal injury. **IMPORTANT: THIS REMOTE IS NOT INTENDED FOR USE AS AN EMERGENCY DEVICE AND SHOULD NOT BE RELIED UPON**

1. **DO NOT RELY ON THIS DEVICE AS AN EMERGENCY STOP DEVICE.**
2. **DO NOT OPERATE THE WIRELESS. REMOTE UNTIL IT IS COMPLETELY ASSEMBLED AND INSTALLED.** Follow instructions and recommendations.
3. **REMOTE MUST BE SECURELY FASTENED.** Fasten to either wrist or to the wood lathe with the magnetic back.
4. **DO NOT GET WET.** The remote may be destroyed or become inoperative if it gets wet.
5. **AVOID EXCESS SAWDUST.** Limit sawdust contact with the remote.
6. **FOLLOW ELECTRICAL CODES.** Make sure wiring codes and recommended electrical connections are followed and that the machine is properly grounded.
7. **KEEP WORK AREA CLEAN.** Do not turn the wood lathe on before clearing it of all objects (tools, scraps of wood, etc.). Keep the nearby area and floor clear of debris.
8. **CHECK SET-UP WITH SPINDLE OFF.** Examine the set-up carefully and rotate the work piece, by hand, to check clearance. In addition, check to see speed is correctly selected before turning on spindle.
9. **ALWAYS CHECK CORRECT SPEED IS SELECTED BEFORE SWITCHING ON THE SPINDLE.**
10. **USE LOWEST SPEED** when turning a new or unbalanced work piece.
11. **TURN AT RECOMMENDED SPEED.** Always operate the wood lathe at the recommended speeds. Consult your wood lathe manual for suggested speeds.
12. **WHEN ROUGHING STOCK,** do not jam the wood lathe tool or chisel into work piece or take too big/deep a cut.
13. **DO NOT OPERATE LATHE IF DAMAGED OR FAULTY.** If any part of your wood lathe is missing, damaged or broken, in any way, or if any electrical component fails, shut off the wood lathe and disconnect the wood lathe from the power supply. Replace missing, damaged, or failed parts before resuming the operation.
14. **ADDITIONAL SAFETY INFORMATION.** The instruction for the safe and proper operation of this product is available from the National Safety Council, 444 N. Michigan Avenue, Chicago, IL 60611 in the Accident Prevention Manual of Industrial Operations and also in the Safety Data Sheets provided by the NSC. Also refer to the American National Standards Institute ANSI 01.1 Safety Requirements for Woodworking Machines and the U.S Department of Labor OSHA 1910.213 Regulation.

Section one:

Installation Instructions

1. Unpack the control panel from packaging.

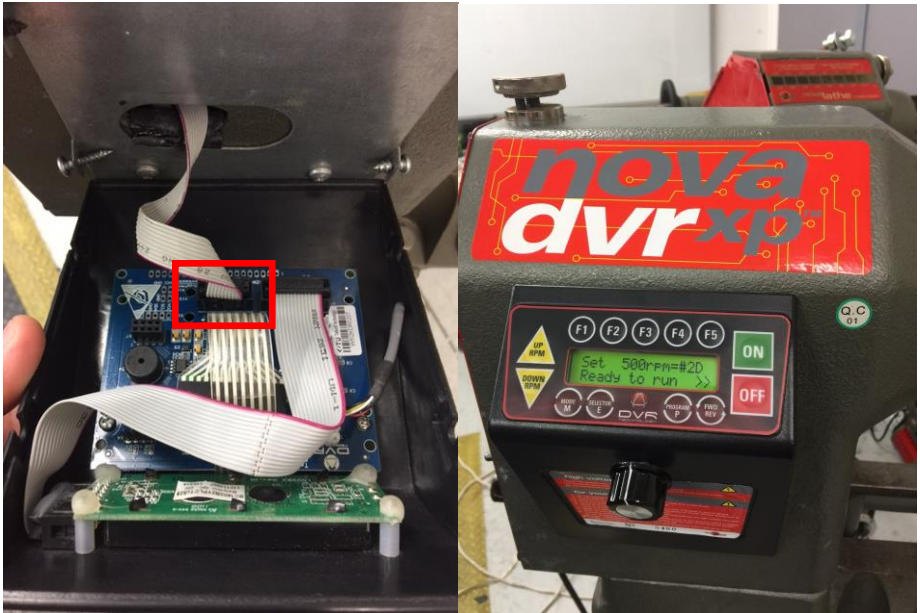
Control panel :



2. Turn off the DVR lathe and unplug its power cord. Wait 2 minutes for the control circuitry to discharge.
3. Remove the Old Control Panel from the headstock by loosening or removing the 4 screws on the side of the Panel. Gently remove and unplug the Old Control Panel from the head stock.



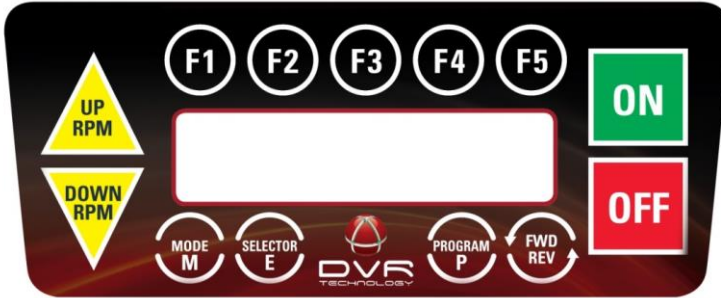
4. Gently plug the cable to your new control panel. Put the control panel back to the on the Headstock and screw in its four mounting screws. Check that the new control panel is secure and tighten mounting screws as necessary.



5. Turn on your DVR lathe, now your DVR is ready to run.

Control Panel Instructions

The Nova DVR new keypad interface to give the user instant access to the preset speeds #1 - #10.



Key	Name	Short description
F1	- Preset Speed 1 Key -	Set speed to “Preset speed #1”
F2	- Preset Speed 2 Key -	Set speed to “Preset speed #2D”
F3	- Preset Speed 3 Key -	Set speed to “Preset speed #3”
F4	- Preset Speed 4 Key -	Set speed to “Preset speed #4”
F5	- Preset Speed 5 Key -	Set speed to “Preset speed #5”
Hold “Mode” + F1 or Double press F1	- Preset Speed 6 Key -	Set speed to “Preset speed #6”
Hold “Mode” + F2 or Double press F2	- Preset Speed 7 Key -	Set speed to “Preset speed #7”
Hold “Mode” + F3 or Double press F3	- Preset Speed 8 Key -	Set speed to “Preset speed #8”
Hold “Mode” + F4 or Double press F4	- Preset Speed 9 Key -	Set speed to “Preset speed #9”
Hold “Mode” + F5 or Double press F5	- Preset Speed 10 Key -	Set speed to “Preset speed #10”

Changing line in the menu:

The menu line can be changed by pressing the “**Fwd / Rev**” key.

Note: Previously, the user had to hold “**Fwd/Rev**” and press “**UP RPM**” or “**DOWN RPM**” key to change the line.

New functions in the control panel

New features have been implemented in the latest iteration of the DVR XP Lathe, these are “*Recommended Turning Speeds Guide*”, “*Powered Assisted Braking*” and the “*Speed dial knob*”

Recommended Speed Guide

The recommended turning speed is a simple guide to advise the turner on the turning speed based on the size of wood and the type of cut the turner wishes to perform.

How to use the speed chart:

1. Press the “**Program P**” button until the “*Speed Guide*” page appears
2. Press the “**Selector E**” button to enter the speed chart
3. Select the type of cut (Finish/Shape Cut or Rough Cut) by using the “**UP RPM**” or “**DOWN RPM**” button and confirm by pressing the “**Selector E**” button
4. Select the diameter of the work piece by using the “**UP RPM**” or “**DOWN RPM**” button and confirm by pressing the “**Selector E**” button
5. Press the “**Program P**” button to set the recommended speed as the current running speed

IMPORTANT NOTE: The “*Recommended Speed Guide*” only provides a rough estimate of the speed which should be used.

The user should adjust the speed value based on:

- The shape, balance and weight of the work piece
- Type of cut which the wood turner is going to perform
- The experience of the wood turner

Powered Assisted Braking (Only for main board V 8.18 or higher)

The powered assisted braking feature can be used to help slow large work pieces when the user has pressed the “**OFF**” button.

How to use the Powered Braking:

1. Press the “**Program P**” button until the “*Assisted Braking*” page appears
2. Press the “**Selector E**” button to ENABLE or DISABLE the power braking
3. IF the braking mode is enabled, the motor will energize the motor when the user has pressed “**OFF**” to help slow down the spindle

Speed dial knob

The speed dial allows the user to control the speed and navigate the menu system on the HMI.

Speed Dial Action	Description
Short Press	(Menu Confirm)
Turn Clockwise	Increase Speed - Fine Adjustment / (Menu Scroll Down)
Turn Counter-Clockwise	Decrease Speed - Fine Adjustment / (Menu Scroll Up)
Press and Hold & Turn Clockwise	Increase Speed - Coarse Adjustment
Press and Hold & Turn Counter-Clockwise	Decrease Speed - Coarse Adjustment

The speed dial has 2 modes. The fine speed adjustment mode which allows the user to accurately change the speed, and the coarse speed adjustment mode, which lets the user quickly change the speed. The increment / decrement of each click of the speed dial depend on the current set speed of the lathe. A small step adjustment at low speed will allow the user to accurately control the speed, while a larger step size at a higher speed will allow the user to adjust the speed quickly. The table below lists the step sizes for the fine and coarse speed adjustment for the speed ranges.

<i>Speed Range (rpm)</i>	<i>Fine Adjustment</i>	<i>Coarse Adjustment</i>
Less than 200	5 rpm	20 rpm
200 – 499	5 rpm	50 rpm
500 – 999	5 rpm	100 rpm
1000 – 2999	10 rpm	200 rpm
3000 and over	20 rpm	500 rpm

For more information and to sign up for our newsletter to receive the latest news, promotions and updates, please visit www.teknatool.com

Section two (Optional Accessory Sold Separately):

NOVA DVR the NOVA DVR Wireless Remote II (SKU 55522)

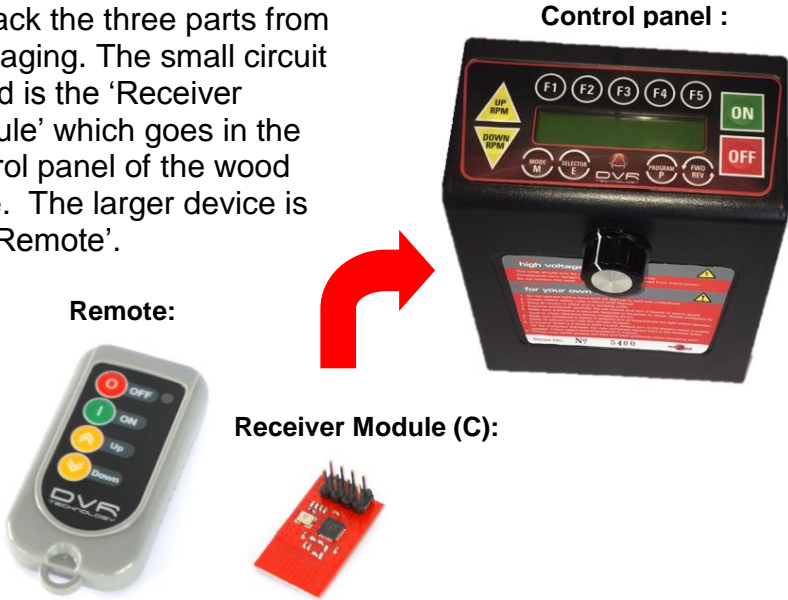
- Wireless control convenience at your fingertips.
- Start, stop and speed adjustments.
- Suitably sized buttons for rapid reference and control.
- Invaluable for long spindle work or large platters/bowls when you can't be close to the headstock.
- 2.4 GHz Radio Frequency (RF) operation (FCC Compliant).
- Range up to 23 feet (7meters) line of sight.
- Up to one year stand-by battery life.
- Up to 6 months battery life with up to 20 commands per day.
- One-Year warranty excludes battery.

NOTE:

- All values are approximate and calculated under the specific test conditions. For end users, these values might be varied according to workshop conditions, other electronic equipment interference, battery types and operation distance, etc.
- DVR Wireless Remote II may not be available in all countries/markets. See our website or your NOVA Retailer for more information.

Installation Instructions

1. Unpack the three parts from packaging. The small circuit board is the 'Receiver Module' which goes in the control panel of the wood lathe. The larger device is the 'Remote'.



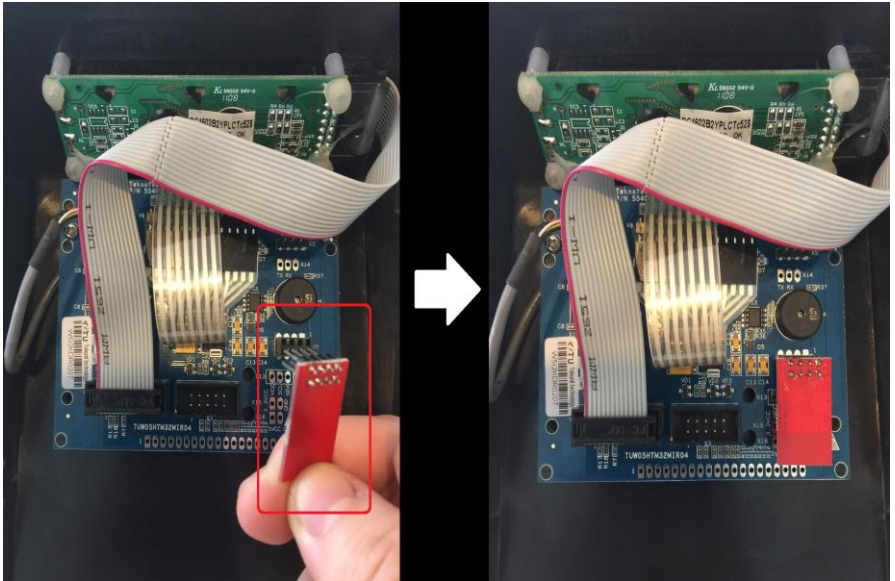
Note: The remote II 5522 sold separately and not included into the kit.

2. Turn off the wood lathe and unplug its power cord. Wait 2 minutes for the control circuitry to discharge.
3. Remove the Old Control Panel from the headstock by loosening or removing the 4 screws on the side of the Panel. Gently remove and unplug the Old Control Panel from the head stock.





Inside the New Control Panel:




4. Plug the Receiver to the user interface board in the position shown below.



5. Put New Control panel back to the on the Headstock and screw in its four mounting screws. Check that the new control panel is secure and tighten mounting screws as necessary.

6. Power on your DVR and press the  button to select the **Wireless Remote** in the Menu. Then press the  button to configure.



7. Press the  ,  button to select “Pair Remote ID” on the screen and then press the  button to begin pairing procedures

Or

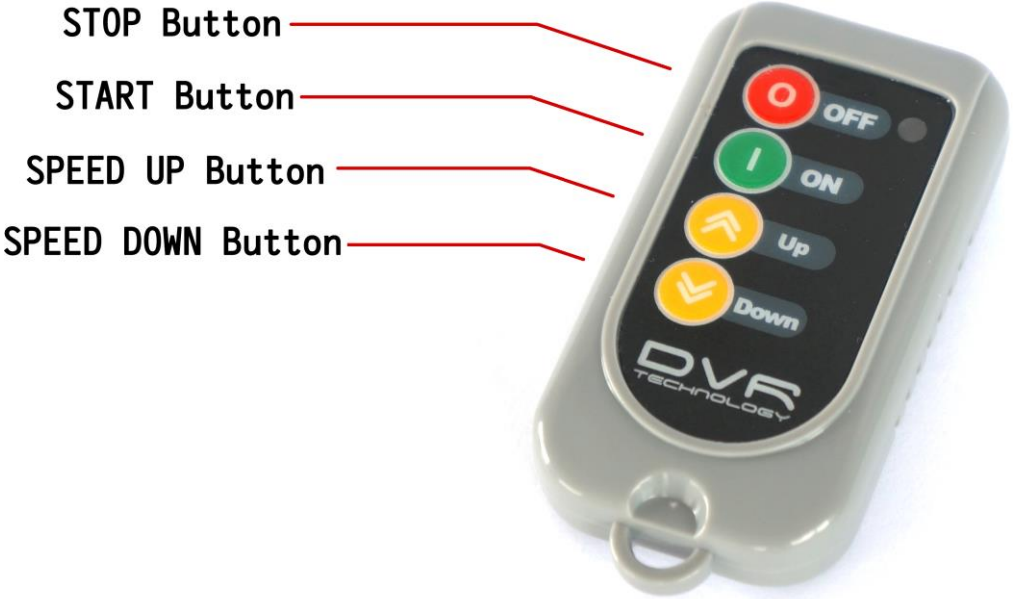
Use rotary speed knob on the control panel to select “Pair Remote ID” on the screen, then press in the speed knob to begin pairing procedures.

8. Press the **<OFF>** key on the remote to pair to the lathe, your DVR lathe and remote are now paired.



Note: If the remote still does not pair, please contact your local Teknatool Agent.

Remote Button Layout



Operating instructions

Starting and stopping:

To start the lathe with the remote, press and hold the Start/Stop button for 2 seconds.

(I would like to mention you must hold down the start button for two seconds due to a safety feature that makes an accidental press not to turn the lathe on)

To stop the lathe, just press and release the Start/Stop button once.



Changing the speed:

To change the operating speed of the wood lathe with the remote, simply press or hold the 'Speed Up' or 'Speed Down' button.

NOTE: When changing the speed, the lathe can be running or stopped.



Troubleshooting:

Battery Replacement:

If the battery fails, you can unscrew the 2 screws on the bottom of the remote and replaced with a **CR1632** battery.

Note: The remote will still be paired with or communicate with your NOVA DVR Lathe after battery replacement.



NOVA DVR Remote Retro Fit Kit & Wireless Remote II Manual

119-1216-005

© Teknatool® International 2016

All rights reserved. Teknatool® USA Inc.



Register your warranty online

www.teknatool.com